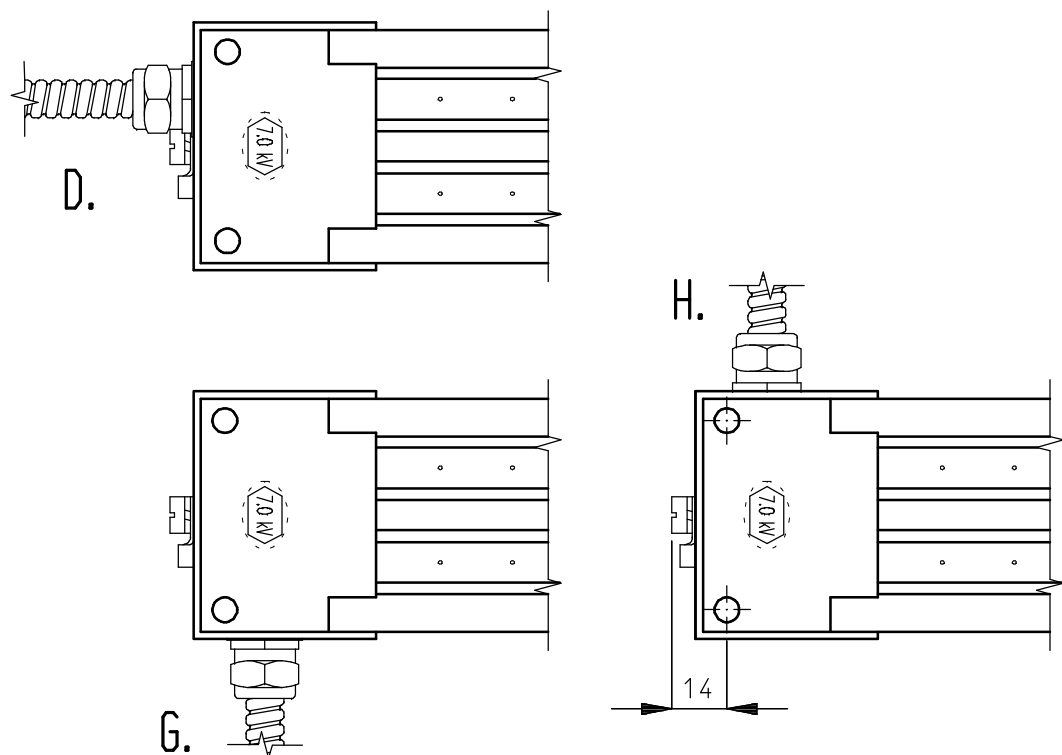
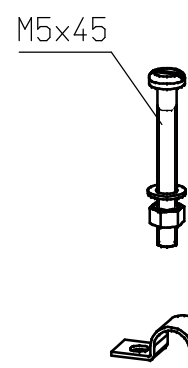


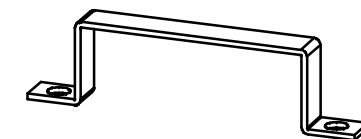
Cable exit options:



Mounting materials included



Bar length > 2m



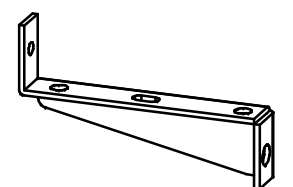
Extra Mounting bracket  
see table "Tot. length"  
(Part no. 3399901000)

Amount of cable clamps=  
(cable length(m)x4)-1

Table extra brackets	
Tot. length (m)	QTY
> 2 - 4	1
> 4 - 6	2
> 6 - 8	3
> 8 - 10	4
> 10 - 12	5

Options

Support bracket  
Part no. 7584900100



Angle bracket  
Part no. 7584900200

