

Specifications		
	Performax Easy	Performax Easy Speed
Available effective length	270mm to 3690mm	90mm to 3810mm
Calculation	(n x 180) + 90	(n x 60) + 30
Overall length	= Eff.L. + 180	= Eff.L. + 180
(n = variable (number of distance between high voltage points))		



1: DIN RAIL Power Supply
100-240 V AC/24 V DC 10A
P/N: 7519020435



2: DIN RAIL Power Supply
100-240 V AC/24 V DC 4A
P/N: 7519020425



3: DIN RAIL Power Supply
100-240 V AC/24 V DC 3,3A
UL LISTED
P/N: 7519020430



Cable Socket M12, straight 5 m
P/N: 7519020365



Cable Socket M12, angled 5 m
P/N: 7524020370
Cable Socket M12, angled 10 m
P/N: 7524020375



With Led indication

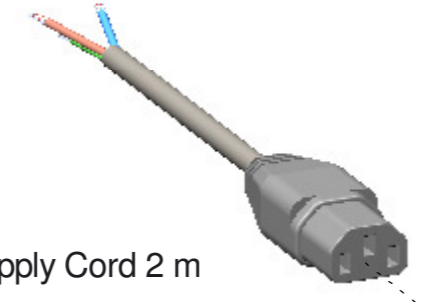
Connector M12, straight
P/N: 7519020350
(screw connections)



Connector M12, angled
P/N: 7519020355
(screw connections)

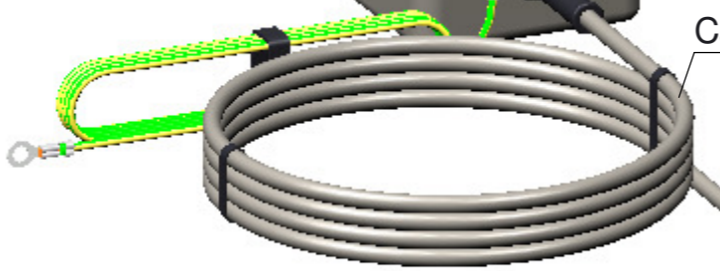


Ac Power Supply Cord 2 m
P/N: 9146340620



Power Supply 100-240 V AC/24 V DC
P/N: 4524001000
Power Supply "Humidity" 100-240 V AC/24 V DC
P/N: 4524001010
(AC Power Supply cord 2m included)

Cable length 5 m

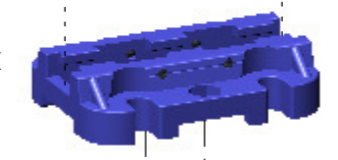


With Led indication

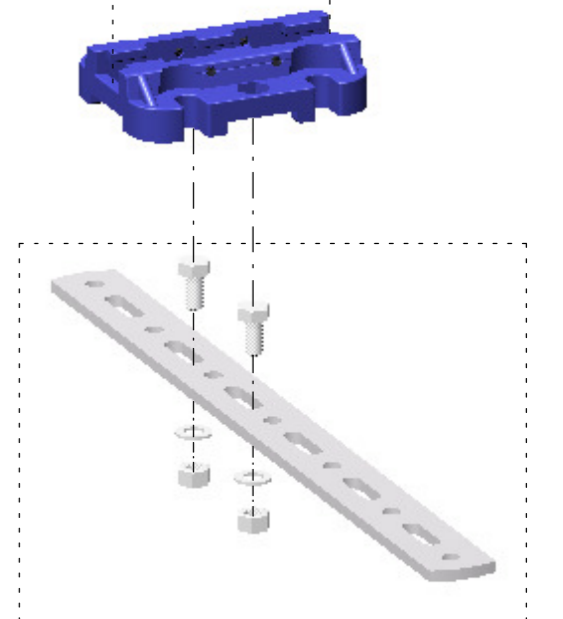
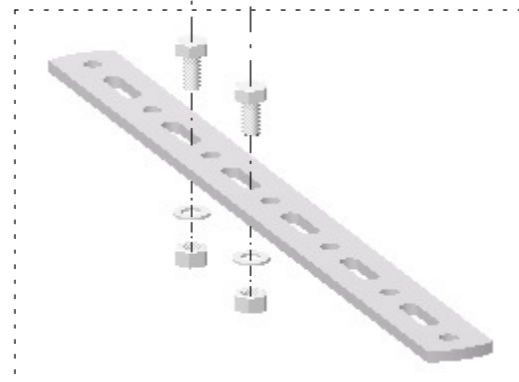
Bar Performax Easy



Bracket Performax
P/N: 4519000120



Optional
Mounting strip
P/N: 4524485100



DIN RAIL Power Supply	
no.	maximum number of bars
1	20
2	4
3	4