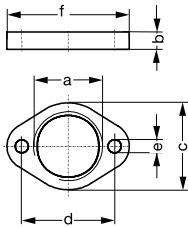


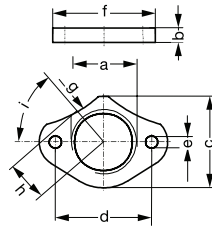
Gewindeflansch

Threaded flange [mm]

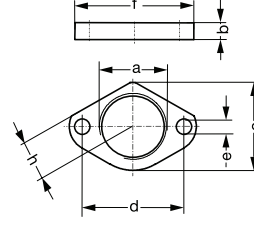
2BX1 037
2BX1 038
2BX1 041
2BX1 042
2BX4 041
2BX4 042



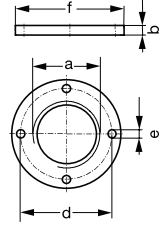
2BX1 040



2BX4 040



2BX1 043
2BX4 043



Typ • Type	a	b	c	d	e	f	g	h	i
2BX1 037	G1¼	14	56	64,5	9,5	80	-	-	-
2BX1 038	G1½	14	72	75	9,5	100	-	-	-
2BX1 040	G1½	14	72	75	9,5	100	R 100	31	57.5°
2BX1 041	G2	16	80	85	12	112	-	-	-
2BX1 042	G4	22	140	150	14	190	-	-	-
2BX1 043	G5	22	-	∅ 210	18	∅ 250	-	-	-
2BX4 040	G1¼	14	56	64	9,5	80	30	-	-
2BX4 041	NPT2	16	80	85	12	112	-	-	-
2BX4 042	NPT4	22	140	150	14	190	-	-	-
2BX4 043	NPT5	22	-	210	18	250	-	-	-